

PARISH  
**PROFILE**  
2020

CCSPITS CHRIST CHURCH SPITALFIELDS







## CONTENTS

---

Introduction	4
Who are we?	4
The Local Environment and Parish	5
Community Groups	6

---

<b>The Vision</b>	<b>6</b>
Our Vision	6
Mission Action Plan	6
Church Planting	7
Challenges and Opportunities	7

---

<b>Theology</b>	<b>7</b>
-----------------	----------

---

<b>The Church Building and its History</b>	<b>8</b>
--	----------

---

<b>Church Family</b>	<b>10</b>
Sunday Services	10
Church Congregation	10
Statistics	11

---

<b>Ministries</b>	<b>12</b>
Alpha	12
Midweek Groups	12
Young Life	13

---

<b>Church In The Community</b>	<b>14</b>
--------------------------------	-----------

Social Transformation Initiatives	14
Other Forms of Parish Outreach - hopes for the future	15
Mission and Charity Partners	15
Christ Church Primary School	16

---

<b>Leadership</b>	<b>16</b>
Staff	16
Lay Leadership	17
Training	17

---

<b>Finances</b>	<b>18</b>
-----------------	-----------

---

<b>Parish Property</b>	<b>19</b>
------------------------	-----------

The Rectory	19
Other Parish Property	19

---

<b>Legal Matters</b>	<b>19</b>
----------------------	-----------

---

<b>New Incumbent</b>	<b>20</b>
----------------------	-----------

What we're looking for	20
Support for the new incumbent	20
The Future	20





## INTRODUCTION

### Who are we?

Christ Church Spitalfields (CCSPITS) is a vibrant church in East London, looking to see Jesus loved, churches grown, and society transformed across the city. We are a dynamic church with growth and multiplication at our heart, and a strong commitment to Christian community in Midweek Groups and at services and events. We are a part of the HTB network of churches, an Alpha Hub church, and our Love Your Neighbour project aims to make a positive impact in our communities especially at this challenging time.

The Local Environment and Parish Situated in the Tower Hamlets Deanery and Stepney Area, CCSPITS is within walking distance of Liverpool Street and other main tube stations. It is very close to the City of London, on the border of Zones 1 and 2, and sits on main roads that lead both East and North out of the city centre. The local environment and Parish encompass a hugely diverse group of communities, depending on which direction you walk from the church.

### Borough of Tower Hamlets

Tower Hamlets is the seventh most deprived borough in the country, but this deprivation is contrasted starkly against the wealth of the City.

**50%+**

Over 50% of children living in poverty.

**69%**

Almost 69% of the population of Tower Hamlets are from minority ethnic backgrounds.

**38%**

One of the highest proportions of Muslim residents in the country (38% compared to the 5% national average)

**30%**

A low proportion of Christian residents (30% compared to the 59% national average).

The area has become increasingly secular and the population is hugely transient.

### Shoreditch (North)

Known for its creative community, Shoreditch attracts young professionals from across Europe. Just to the North West, on the parish boundary lies the site of the proposed Goodsyrd Development set to provide over 100 new business, leisure and restaurant spaces and 500 new homes.

### Aldgate and the City (West)

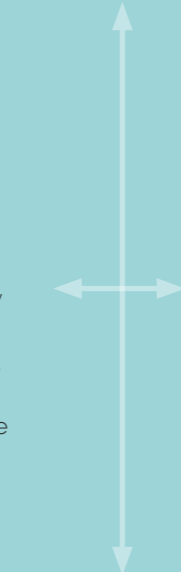
Contrasting with the poverty of the surrounding areas, Aldgate and the City is hugely wealthy, attracting commuters and professionals from Monday-Friday. We have a number of links with the City, including events and services held at the church on behalf of local law firms and businesses.

### Spitalfields and Banglatown (East)

This area has a large Bangladeshi Muslim population, situated next to the East London Mosque in the neighbouring Parish - one of the largest mosques in London. Banglatown is also home to Brick Lane, with all its history and culture, Indian-style restaurants and mini supermarkets. The area has a history of poverty, conflict and racism.

### Whitechapel (South)

Historically impoverished and with a large homeless population, Whitechapel consists of a hugely diverse population of East End families, Bangladeshi families, other immigrants, students attending the nearby Queen Mary University London, and young professionals. The Royal London Hospital is located here along with community centres such as the Brady Arts Community Centre and the area has a connection with the Salvation Army, which was started in Booth House, just on its doorstep. Transport links to Whitechapel are being improved with a Crossrail station and, as part of this redevelopment project, the Borough Town Hall is due to move to the site of the old London Hospital.



The diversity of this area provides huge mission opportunities for CCSPITS as we look to reach out to Muslims, the homeless, those struggling with drug addiction, students and young professionals working in the City or in the creative industries. There are also exciting possibilities for collaboration with other churches in the area and organisations such as the Good Shepherd Mission and The Salvation Army.





## Community Groups

A number of community groups exist within Spitalfields with the purpose of improving and promoting interest in the local area:

- Spitalfields Community Group
- Spitalfields Forum
- Spitalfields Market Residents Association
- Spitalfields Music
- Spitalfields Open Space
- Spitalfields Small Business Association
- Spitalfields Society
- Huguenots of Spitalfields

We are working with several of these groups as part of our church gardens redevelopment project and hope to build on these connections.



## THE VISION

### Our Vision

At the heart of everything we do at CCSPITS is our vision to see Jesus loved, churches grown and society transformed. This guides our values, to be a church that is brave, generous and together.

#### BRAVE

We will take risks to reach out to those around us

#### GENEROUS

We will give generously to build up our church family

#### TOGETHER

We will look out for each other and commit to meeting together

### Mission Action Plan

Built on the foundation of our vision and values, our Mission Action Plan focuses on four main areas:

1. **Discipling Newcomers** - through newcomer events and a clear newcomer pathway
2. **Midweek Groups** - multiplying and growing groups
3. **Make a Difference Teams** - growing the number of church members volunteering regularly on a team
4. **Gatherings** - improving our online and in-person church gatherings

“ *The people at church are incredible and have been instrumental in my growth and drawing closer to God.* ”

## Church Planting

CCSPITS has benefitted from the generosity of planting churches, most recently in 2014 when a group of people from St Paul's Shadwell and HTB planted a new 5pm congregation which led to growth in our church family. We would love to plant, and have felt called to consider options for planting in a number of neighbouring areas. Although none of these have as yet come to fruition, we would be keen to move purposefully towards planting as a part of our strategy for growth, both during and after the pandemic. At present, we are also exploring a strategic mission partnership with a church in the City.

## Challenges and Opportunities

This is an exciting time in the life of CCSPITS as we consider the road ahead and the challenges and opportunities we face. For this section we invited feedback from the PCC, staff team and congregation. The predominant theme that emerged was integration - how we create community, how we become a diverse church and how we welcome people in.

### Community:

- Engaging with and serving the local community (youth, families, people of different faiths, business and professionals).
- Maintaining a sense of community within the church while remaining open to those outside the church.
- Creating community across all four congregations, the 8:30am, 11am, 5pm and the emerging online congregation.

### Diversity:

- Becoming diverse within both the leadership and congregation.
- Becoming a welcoming church for people of all ages, ethnicities, genders, and socioeconomic backgrounds.

### Welcoming people in:

- The prominent location and history of the church attracts large numbers of visitors, providing opportunities for evangelism and growth.
- Our church building is an amazing resource that can be shared with other groups and organisations, bringing people in.

Alongside these main focus points and with the emergence of online services as a part of our offering due to COVID-19, digital strategy was also highlighted as a key challenge and opportunity. A question was also raised regarding how we work with local churches and remain relevant with increased competition for people's attention.

## THEOLOGY

Our tradition is evangelical and the Bible is taken seriously as the word of God, with central relevance in our lives. We welcome the Holy Spirit in our worship and ministry and are expectant about God's future plans for us as we develop new ways of serving and reaching out to the community. We support women in leadership, and we would welcome a female rector.



Our Patron is CPAS.





## THE CHURCH BUILDING AND ITS HISTORY



### A brief timeline:

- **1729**  
Christ Church Spitalfields built
- **2004**  
Nave restoration completed by the Friends of Christ Church Spitalfields (now closed) & the PCC of Christ Church Spitalfields
- **2015**  
Organ restoration completed by the Friends of Christ Church Spitalfields
- **2015**  
Crypt redevelopment completed by the PCC of Christ Church Spitalfields
- **2017**  
Quinquennial Inspection completed by Inspecting Architect, Michael Morrison

CCSPITS is blessed with a beautiful church building that accommodates a whole variety of services and events. The nave is used for Sunday gatherings, midweek church services and, more recently, has been installed with audio/visual equipment to allow for live streaming and recording of online content. The crypt offers a flexible space out of which we run the Love Your Neighbour Food Pantry and provides workspace for staff.

Designed by Nicholas Hawksmoor, the church is a Grade 1 Listed building and an important piece of architectural history. This draws many visitors through the doors, creating exciting opportunities for evangelism, but does pose a challenge as we navigate using the building to its fullest while respecting heritage and tradition.

We have a business partnership with an Events Company that coordinates event bookings held in the nave and Hanbury Hall, and runs a cafe in both Hanbury Hall and the church crypt.

The condition of the building is generally good with no major repair work due and maintenance is under the oversight of the Building and Facilities Manager.

### The Richard Bridge Organ

Completed in 1735, the organ is regarded as one of the most important historical organs in the world. A major restoration was completed in 2015/16 by the Friends of Christ Church Spitalfields and the firm of William Drake Ltd of Buckfastleigh. The organ is now managed by the PCC and maintained under the oversight of our Curator Organist, Gerard Brooks, and Associate Organist.

A well-established organ recital concert series is held each year, featuring world-renowned organists. Although not used regularly in church services, the organ is used to accompany miscellaneous services and events, including weddings, funerals and carol services.

“*Watching the church grow has been a joy. Being part of the community is humbling and seeing the building used to enable church life has been a blessing.*”



### The 8 Bells

The peal of eight bells are considered to be one of the best rings of eight in the country and our Steeple Keeper, Alan Regin, is one of the country's finest ringers, awarded an MBE for services to bell ringing in 2019. The bells and the ringing are under Alan's oversight.

### Gardens

Situated to the north side of the church, the Gardens are owned by the church and managed in conjunction with Tower Hamlets. Plans are currently in development to redesign the Gardens.

### Garden Building

Shared by the church and Christ Church Primary School. The building is the subject of a legal case which ended in January 2019 (please ask for more information).





# CHURCH FAMILY



## Sunday Services

### 8.30AM

Traditional BCP service held twice a month

### 11AM

All age service with special provision for children and youth

### 5PM

Typically attracts a younger demographic and has special provision for students

All our services are live streamed and available on demand.

## Church Congregation

Our Electoral Roll stands at 196, although we estimate the overall worshipping community at nearer 400. While Sunday attendance has been impacted by COVID-19, with many people joining services online instead of in-person, attendance on Sundays is at 200 on average and we have seen steady growth across the last four years.

The age range of the congregation is predominantly within the 18-69 bracket, although we have been excited to see growth in our children, youth and student groups over the last few years.

The church's social and ethnic mix is predominantly white British, prompting our desire to become more inclusive and representative of the diversity of the communities on our doorstep.

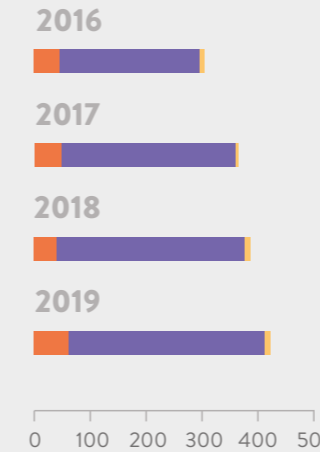
**“ I have seen CCSPITS grow a lot in the past five years, from young members who came with the 5pm service, people getting married and the 11am service coming alive with more families! So much inward growth, and I am excited about the Love Your Neighbour work going on which is a demonstration of outward growth.**

## Statistics

### Worshipping Community

Number of People

0-17 18-69 70+



We define our worshipping community as those who are committed and actively involved with the church, whether through regular attendance of Sunday services, being part of a Midweek Group or volunteering on a team (or all three!).

### Christmas Services

Number of people

#### 2016

#### 2017

#### 2018

#### 2019



Our Christmas carol services are always well-attended, often by more visitors than CCSPITS regulars. As well as our carol services, we hold a Christmas Eve and Christmas morning service.

### Company Carol Services

In addition to our church Christmas services, we also hold carol services for companies in the area, including four local law firms. In 2019 we held five company carol services, with around 900 people attending in total.

### Easter Services

Number of people

#### 2016

#### 2017

#### 2018

#### 2019



### Weddings

We hold on average seven weddings per year.

### Funerals

In recent years we haven't held any funerals.

### Baptisms and Thanksgivings

We have been excited to see a steady growth in the number of baptisms over the last four years, with an average of 10 per year. For new parents, we offer either an infant baptism or thanksgiving service.





# MINISTRIES



## Alpha

Alpha forms a major part of the discipleship journey for members and those new to church. We run courses three or more times a year (online or in-person) and encourage anyone who hasn't done a course before to give it a try. Growing personal evangelism within the congregation is a key focus looking forwards and Alpha provides the perfect opportunity for church members to take steps in this, inviting their friends and colleagues to a course.

We are an Alpha UK Hub church, which involves working closely with Alpha HQ to pilot new content, attending their leadership training courses and encouraging other churches in our area to run courses.

**“ Helping out with an Alpha group with guys from the Tower Hamlets mission was an amazing insight into a different part of our local community and really challenging faith-wise, meeting people who had come to know Jesus from turmoil in their past.**

## Midweek Groups

**“ I love my small group - we are from different faith traditions and have been together for some time and can talk about anything with each other - even and especially our struggles or doubts. This is much needed to be able to handle the challenges of life.**

Our Midweek Groups are the life of the church, enabling the congregation to meet outside of church services and creating community in a way that can't be achieved on Sundays alone. We have 17 groups at present and this number is growing. Groups meet regularly and cover a huge range of content, from church-wide campaigns on spiritual disciplines to book studies, e.g. Emotionally Healthy Spirituality, and Bible studies. Lockdown has shown the importance of our Midweeks and their flexibility to meet online and continue to grow at this time has been exciting.

While the majority of groups currently meet weekly or fortnightly and are grouped according to locality, we are hoping to also offer more short-course and interest-based Midweeks in future, as well as considering how we engage families.

## Young Life

Children, youth, families and students are a key part of who we are as a church. We want all our children and young people to grow up knowing they are loved by God and that they are welcome here as we journey together to know Jesus better.



## Kids

**We have groups that meet at the Sunday 11am service, split into the following age groups:**

- Little Lanterns - children aged 0-5
- Primary zone - children aged 5-11

Going forward we hope to expand our provision to include a Preschool Zone for children aged 3-5 years old. We are also keen to develop the area of Family Discipleship, resourcing and supporting parents as they share their walk with Jesus with their children.

On Wednesday mornings, we run a weekly Parent and Toddler Group, involving time for children to play while parents enjoy coffee and a chat, followed by singing and story time with a Christian focus. The group is open to families outside the church and we are currently determining the best format for welcoming local families in and providing support.

## Youth

Our youth group (aged 11-18) meet at the 11am Sunday Service. We have a great group of youth who are committed and engaged, and we would love to see this group multiply. Bible study topics follow the sermon in the main service which means they can discuss any questions with their parents. Once a month, we encourage the group to join the main service as we believe it is important they become accustomed to adult sermons.

This summer we held our first ever youth trip away which was a real highlight of the year, and we hope to hold more trips in the future.

Going forward we would love to begin a Youth Club held at church once a week. This would be a place for hanging out, bringing friends, playing games and asking the big questions of life.

## Students

Our student group consists of students studying at a number of universities across London. Started as its own ministry in 2017, it supports between 20 and 50 students and people of student age.



Our current group of committed students are largely from Christian backgrounds.

**Student life at CCSPITS includes:**

- Weekly student Midweek Groups
- Annual Student Weekend Away
- Student Hangouts - a weekly social after the 5pm service
- Mentoring - the majority of students are connected with someone older in the church

We are keen to give students the opportunity to take on leadership roles and use Midweek Groups as a platform for this, encouraging those who would be good leaders to facilitate studies and discussion. As they grow and become more self-sufficient they are then able to start their own Midweek Group.

Student ministry is supported by Fusion Movement, for whom we are a cohort church. They support us with training and resources and run an annual conference.





## CHURCH IN THE COMMUNITY



### Social Transformation Initiatives

#### GrowTH

We work in partnership with the central GrowTH Charity and other churches around Tower Hamlets to deliver a night shelter for homeless men and women over seven months of the year. This is held at Hanbury Hall with up to 60 volunteers from church involved each year, cooking food, setting up beds and talking to the guests.

Our vision for this is not only to help the guests secure accommodation and jobs but to provide opportunities for telling them about Jesus. Over the years we have seen some amazing testimonies of lives rebuilt and guests joining our church and other churches across Tower Hamlets.

#### Love Your Neighbour

As a response to the impact of COVID-19 and as part of the nationwide Love your Neighbour campaign led by HTB, in August 2020 we set up the Food Pantry. Food poverty is a real challenge for many families in our community so we partnered with Christ Church Primary School and built an amazing volunteer team from the church to package and deliver food each week to families across Spitalfields and Whitechapel. Our desire is that, through this, we will be able to provide practical support to families at this difficult time and build closer relationships with them.

“ *Living in a community house has been amazing. It allows the church to not only be the building or services, but a lifestyle and community where we use hospitality and the resources we have to connect people to God and each other. We learn daily what it means to love others, to serve God, and to give and be given grace.* ”

### Other forms of Parish Outreach – hopes for the future

While these are just ideas at present, we would love to give church members the opportunity to use their skills to support local families, whether that be through IT training or help with writing CVs. We are also exploring starting a CAP debt centre in the area.

#### Mission and Charity Partners

##### Spitalfields Crypt Trust

Started in the CCSPITS crypt, SCT exists to help people facing homelessness and drug addiction to transform their lives. It is now based in Shoreditch but still has a connection with CCSPITS and a number of church members are trustees and volunteers.

##### Crossroads Counselling

Counselling service for those living in Tower Hamlets, particularly those on low income. Church members are Trustees.

##### Door of Hope

Exists to support women who are involved in prostitution and to help them to find routes out. A number of church members are trustees and volunteers.

##### Spitalfields Community Meal

Originated by CCSPITS members, Spitalfields Community Meal was set up four years ago in conjunction with InnerCHANGE (an international incarnational missionary order working amongst the poor). The main objective is to enable a worshipping community amongst the more marginalised members of our local area who would otherwise be unable to access church as currently expressed at CCSPITS, whether due to language barriers, culture, religion or other complex life issues common to the majority demographic seen in the Parish.

##### Christ Church Foundation\*

Set up in 2000 by Eric Elstob (then chair of Friends of Christ Church), the Foundation holds funds and fund income on trust for the long-term maintenance, upkeep and repair of Christ Church Spitalfields. Church members are trustees.

##### Mary Baker Charity\*

An amalgam of some 12 charities set up by members of CCSPITS, its remit is to make personal grants to those who are sick or in financial need. Church members are trustees.

##### Miss Vaughan Charity\*

The Rector of CCSPITS is one of three trustees, along with the Rectors of St. Matthew's Bethnal Green and St. Leonards Shoreditch. The Miss Vaughan Charity makes a financial disbursement twice a year to each of the churches' 'hardship funds'.

##### Samuel Butler Charity\*

Set up to make financial grants to a number of church schools and educational projects related to the parishes of benefit. In the last decade we have approved grants to four of the primary schools in our Parish and received a grant ourselves for a children's educational guide to the Church.

##### Norton Folgate Almshouses\*

Set up to provide accommodation for the poor of Spitalfields and Tower Hamlets, the Almshouses comprise eight units of Victorian accommodation in Puma Court and three units of accommodation in Commercial Street.

\*The Rector is ex officio trustee.





## Christ Church Primary School

Adjacent to the church building, Christ Church Primary School is incredibly open to engagement with the church. The Governing Board and Parents and Friends Association include many committed church members and the Rector is ex officio Governor of the school.

In partnership with the Children and Families Pastor, the Rector is involved in school assemblies on a semi-regular basis and maintains regular contact with the Headteacher.

A highlight of the year is our annual prayer week which is organised by the Children and Families Pastor and is held at the school, with participation from the students and parents. We use the Prayer Spaces in Schools resources and organise a team of volunteers from CCSPITS to assist with the running of each session.

The Parents and Friends Association runs regular social and fundraising activities such as a Christmas and Summer Fair and community days for DIY and spring cleaning of the outside school spaces, which brings together school families and church members.

“As a child I attended Christ Church Primary school and the church has always been the place I would choose to worship and be part of a spiritual family .

## Ministries at the School

### Parents Ministry:

We have recently appointed a School's Pastor (voluntary role) from within the congregation, who oversees this ministry. The role includes the following:

**Coordinates PFA activities** (coffee mornings, fundraising, socials, educational events, etc) as a way to grow and develop relationships amongst the parent community.

**Oversees pastoral care of parents**, including providing one-to-ones, developing support networks, raising up leaders amongst the parent community (both Christian and non-Christian) and facilitating a mutually supportive peer group. Our aim is to grow deep relationships and to provide discipleship to those who are open to it.

**Regular parent prayer meetings** started four years ago, this has expanded to include a weekly Zoom prayer meeting for anyone involved in the School.

**Community Meals** held once a month, these provide space for families to meet, eat together, and do an optional Bible Study.

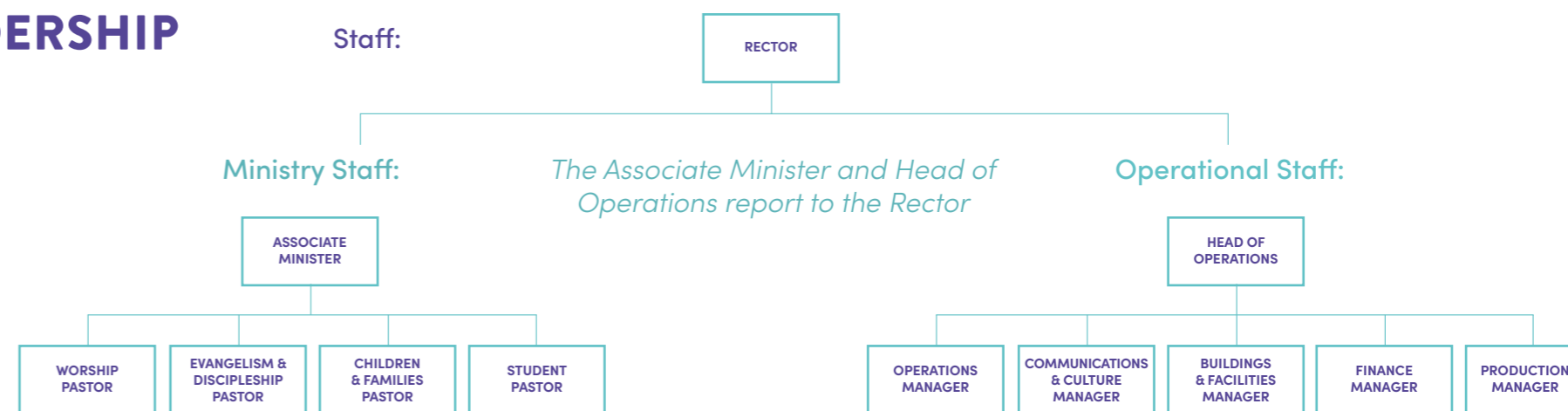
### Faith in Action

Extra-curricular club offering school children an opportunity to help with the GrowTH Night Shelter. As well as Christ Church Primary School, there are a number of other schools in the area:

- Thomas Buxton
- Osmani Primary School
- St Anne's Catholic School
- Swanlea School
- Canon Barnett Primary School



## LEADERSHIP



### Residential Discipleship Year Interns

Our year-long internships are all about encouraging interns to grow in their faith and love for God, supporting them as they work out God's plan for their life. They receive theological and practical training for leadership and mission, are encouraged to live together at our church community house and to become involved in many aspects of church life. Each internship is adapted to the individual but could focus on any of the following areas:

- Children and Youth
- Students
- Production
- Social Transformation
- Creative

### Lay Leadership

The PCC, Standing Committee and Finance Team are all fully resourced and are functioning effectively

The Rector will also be supported by a preaching team, the community of midweek leaders and the school's pastor

Safeguarding is a priority for us and we have a team which meets quarterly to review any issues.

**Leadership of the overall vision and strategy of the church is the responsibility of the Rector, whilst the governance of the church is in the hands of the PCC. The staff team work to implement the vision of the church under the leadership of the Rector and the governance of the PCC.**

### Training

**Since 2003 we have sent seven people into ordained ministry and had over nine Ordinands on placement with us. At present we have one person in training for ordination and three people in the process of discernment.**

We encourage lay leadership of Midweek Groups and ministries and train people through training events and coaching input from other leaders. Staff are also encouraged to engage with training specific to their work area and we attend HTB Network events for additional training and networking.

### Safeguarding and DBS Checks

We believe that safeguarding is everybody's responsibility and ensure that safeguarding training is a priority for staff and lay leaders. All staff, PCC and Children's Team volunteers complete the online safeguarding training courses recommended by the Church of England. We also ensure that all those (staff or volunteers) who are involved in work with Children or Vulnerable Adults receive a DBS check.

### PCC

As part of the on-boarding process for the PCC, we encourage new members to attend the PCC Workshop Training Course run by the Stepney Centre for Training and Development.





## FINANCES

### Income and Expenditure 2019

Income	2019	Change from 2018
Donations	£441,827	▲ 6.24%
Income from Charitable Activities	£10,492	▼ -28.28%
Income from Business Activities	£176,888	▼ -15.71%
<b>Total Income</b>	<b>£626,207</b>	<b>▼ -1.75%</b>

Expenditure	2019	Change from 2018
Staff	£249,818	▲ 4.35%
Building costs	£160,804	▼ -14.11%
Common Fund	£86,000	▲ 1.65%
Community Transformation	£25,684	▼ -2.23%
Ministries	£43,293	▼ -9.28%
Operations	£60,068	▼ -10.56%
Legal fees	£33,806	▲ 13.48%
Depreciation	£61,308	▼ -1.5%
Business rates	£53,938	▲ 100%
<b>Total</b>	<b>£774,721</b>	<b>▲ 4.07%</b>

“ I have felt encouraged and blessed to be part of a church family and see the love of God in action.

### Common Fund contribution

We want to be generous with what we have so have committed to give a 105% Common Fund contribution.

### Giving

We believe giving is a key part of discipleship so include it within our sermon series quarterly. We have 115 regular givers at present.

NB: In the annual report we customarily split staff costs into their associate ministries, to show the total cost of running those ministries. Here the staff costs have been kept as a whole to show the total expenditure on staff. GF.

## PARISH PROPERTY



### The Rectory

The Rectory is a beautiful Grade 2\* Listed building with six bedrooms, five reception rooms and two kitchens. The next quinquennial inspection is due in 2020 and it is an LDF property forming part of the Rectors Freehold.

The Rectory basement has been converted into offices used by staff. Newcomers

Connect Events and Midweek Groups (before COVID-19) were previously held at the Rectory.

There is a possibility the Diocese will look to buy a smaller, more suitable property in the future that meets the needs of the church and incumbent, though this is not planned at present.

### Other Parish Property

#### All Saint's House

Previously the Rectory to All Saints Church, Buxton Street, All Saints House is now used as a community house for the Associate Minister and Resident Discipleship Year Interns. It consists of three bedsits, one 3-bed curate's flat and one 1-bed garden flat.. It is held in trust by the LDF for the benefit of the Parish.

#### Hanbury Hall

Built in 1719 as a Huguenot Chapel, Hanbury Hall was redeveloped in 2014, providing the church with a hall for events, a cafe (operated by our Business Partner) and a 2-bed flat for rent or staff housing. It is held in a trust (three trustees: Archdeacon of London, General Secretary of the Diocese of London and the Rector of CCSPITS) for the benefit of the Parish and 'for the purpose of Christian education'.

#### Norton Folgate Almshouses

Situated in Puma Court, the Almshouses provide accommodation for the poor of Spitalfields and Tower Hamlets.

## LEGAL MATTERS

In January 2019 a legal case concluded regarding the Garden Building. The church is currently working with the other parties involved to carry out the undertakings given to the court. We can provide more detailed information on request.





# NEW INCUMBENT

## What We're Looking For

We are looking for a Rector who is **guided by our values, driven by mission and fuelled by purpose**. For this section we again invited feedback from the PCC, staff team and church congregation who identified the following priorities and desirable characteristics:

### Priorities:

- Authentic love for Jesus, the Bible and people
- Able to lead the church and build a sense of community, moving in the Holy Spirit's power
- Strategic thinker with a track record of growing churches
- Lifestyle of prayer
- Mission-minded evangelist
- Good communicator with a wide range of people, able to engage across the board with our diverse Parish
- Strong understanding of East London's transient nature, with the ability to spot the right season to make changes
- Ability to have oversight of a large church, and has experience of leading in a staff team. Has the skills required to delegate and grow leaders
- Inspiring and biblical preacher, able to teach and disciple for all stages of faith
- Pastoral
- Resilient and empowering leader

### Desirable:

- Willingness to try new ideas
- Not fixated on one style or tradition of church
- Sense of humour
- Friendly and approachable
- Passion and experience of leading a church in the City
- Aware of local demographic
- Vision for reaching outside the church building
- Appreciation of the history of the church building and local area

## Support for the New Incumbent

We have a strong support network in place for the new incumbent, including a passionate staff team, experienced Churchwardens and a committed PCC.

# THE FUTURE

This is an exciting time in the life of the church with a growing congregation, opportunities for church planting and a passion to reach outside the building to make a real difference in our community. We are looking forward to welcoming and working with the new Rector as we together pursue God's vision for us as a church to see Jesus loved, churches grown, and society transformed across this city.



## CONTACT

e. [wardens@ccspits.org](mailto:wardens@ccspits.org)  
w. [ccspits.org](http://ccspits.org)

Christ Church Spitalfields  
Commercial St London E1 6LY